

تهویه سبلان



[www.tahvihsabalan.com](http://www.tahvihsabalan.com)

منحنی های مشخصه  
اگزاست فن های بک وارد

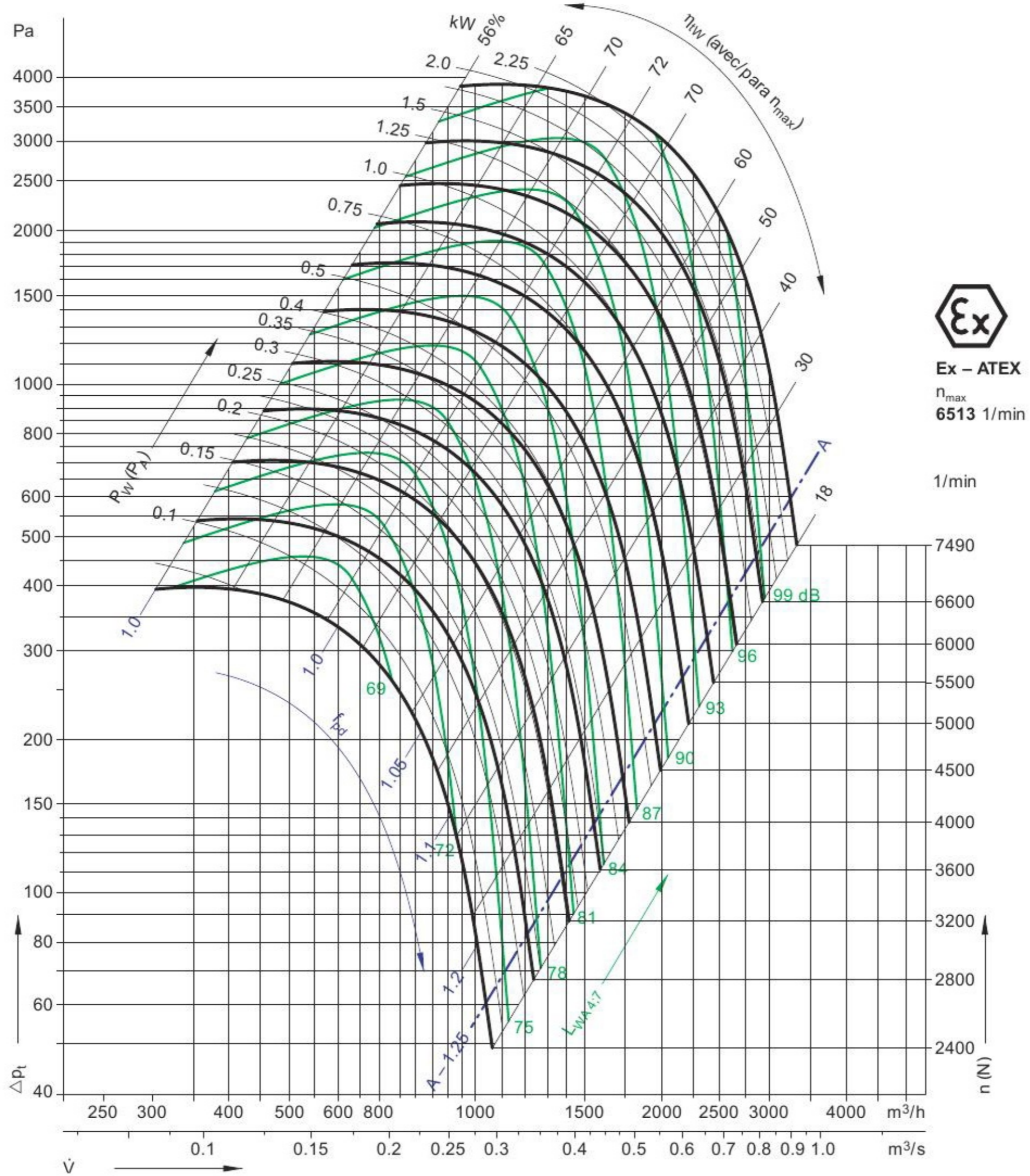




200 mm

WHEEL DIAMETER

$\rho_1 = 1.2 \text{ kg/m}^3$

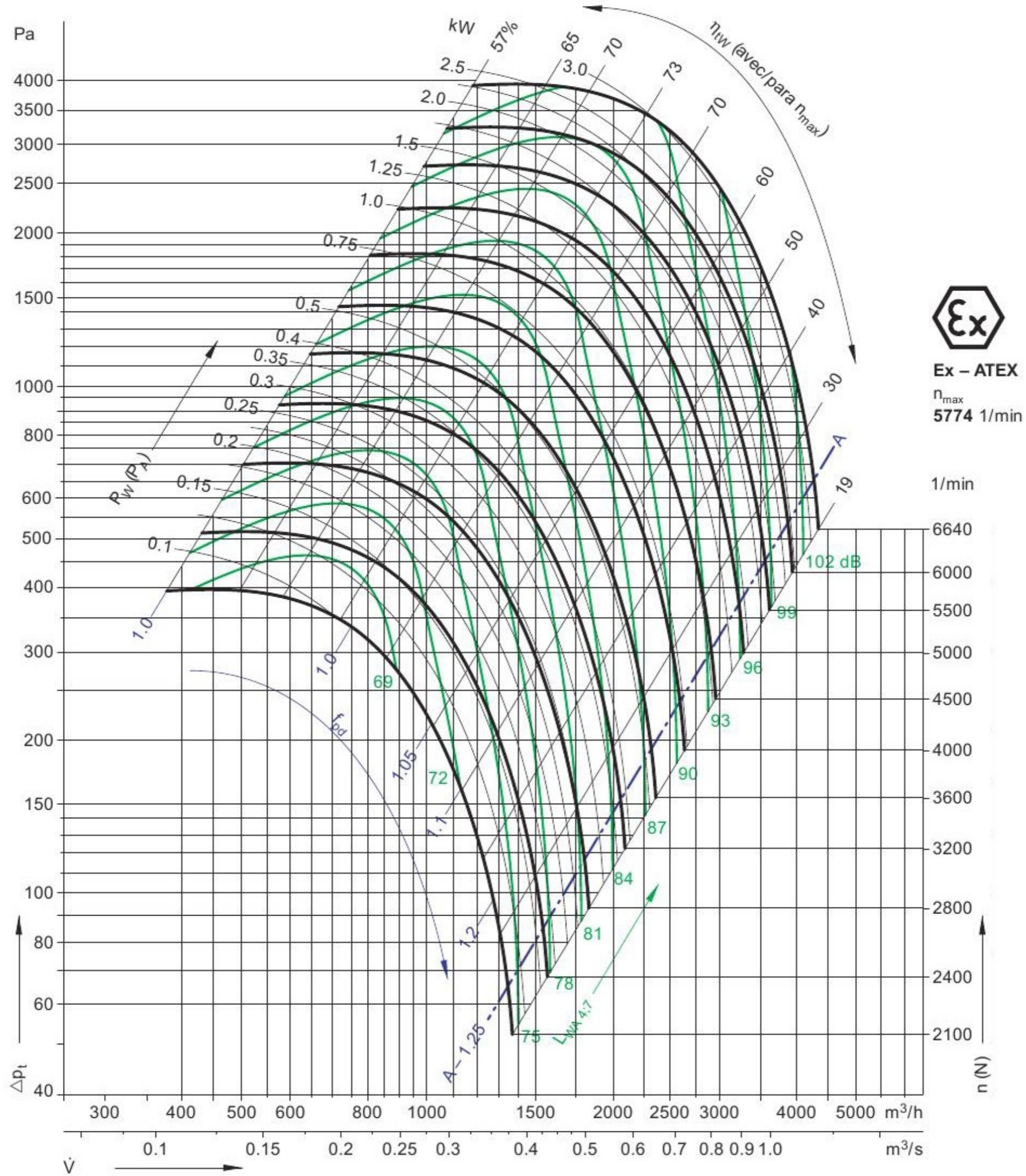




225 mm

WHEEL DIAMETER

$\rho_1 = 1.2 \text{ kg/m}^3$

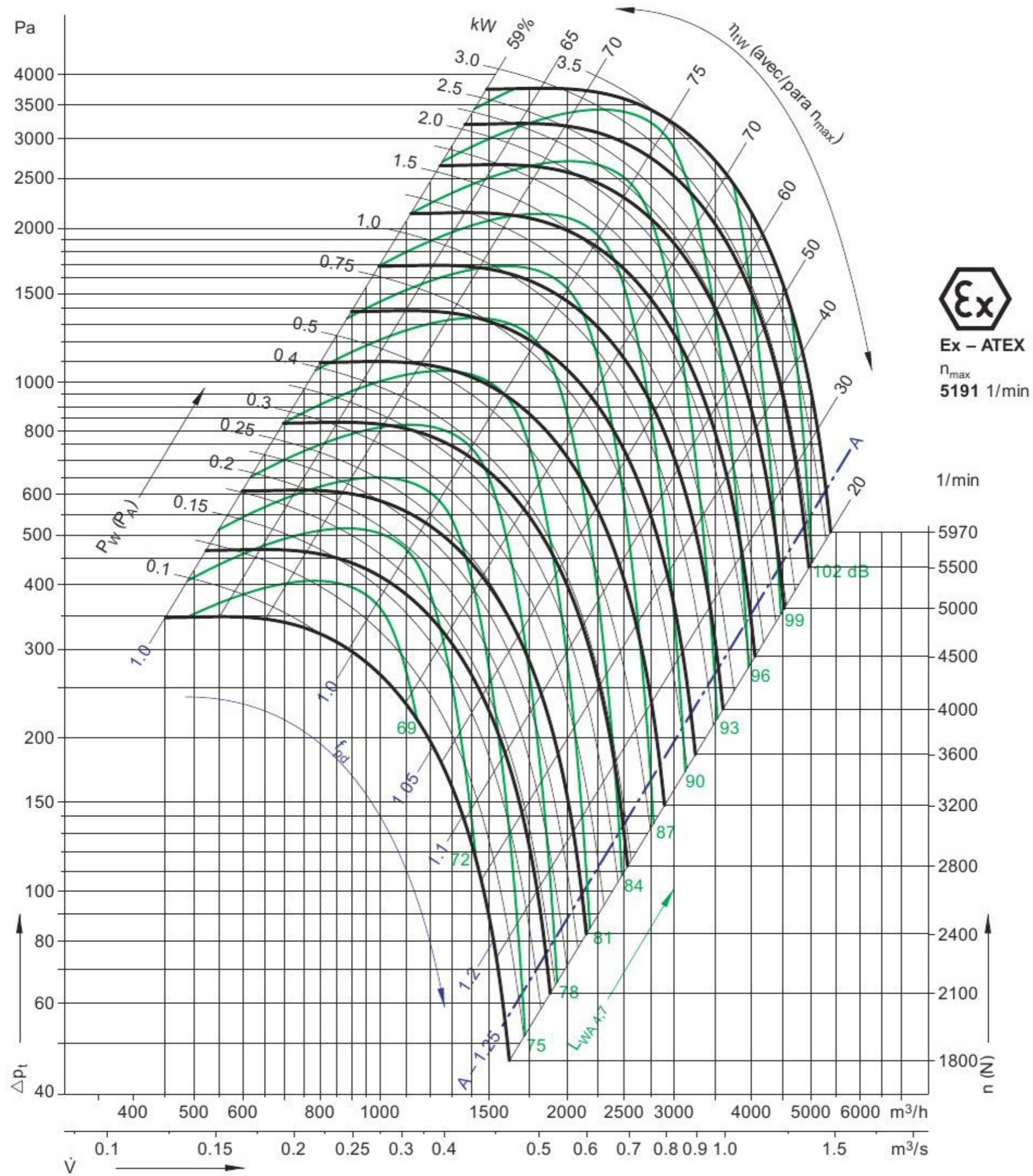




250 mm

WHEEL DIAMETER

$\rho_1 = 1.2 \text{ kg/m}^3$

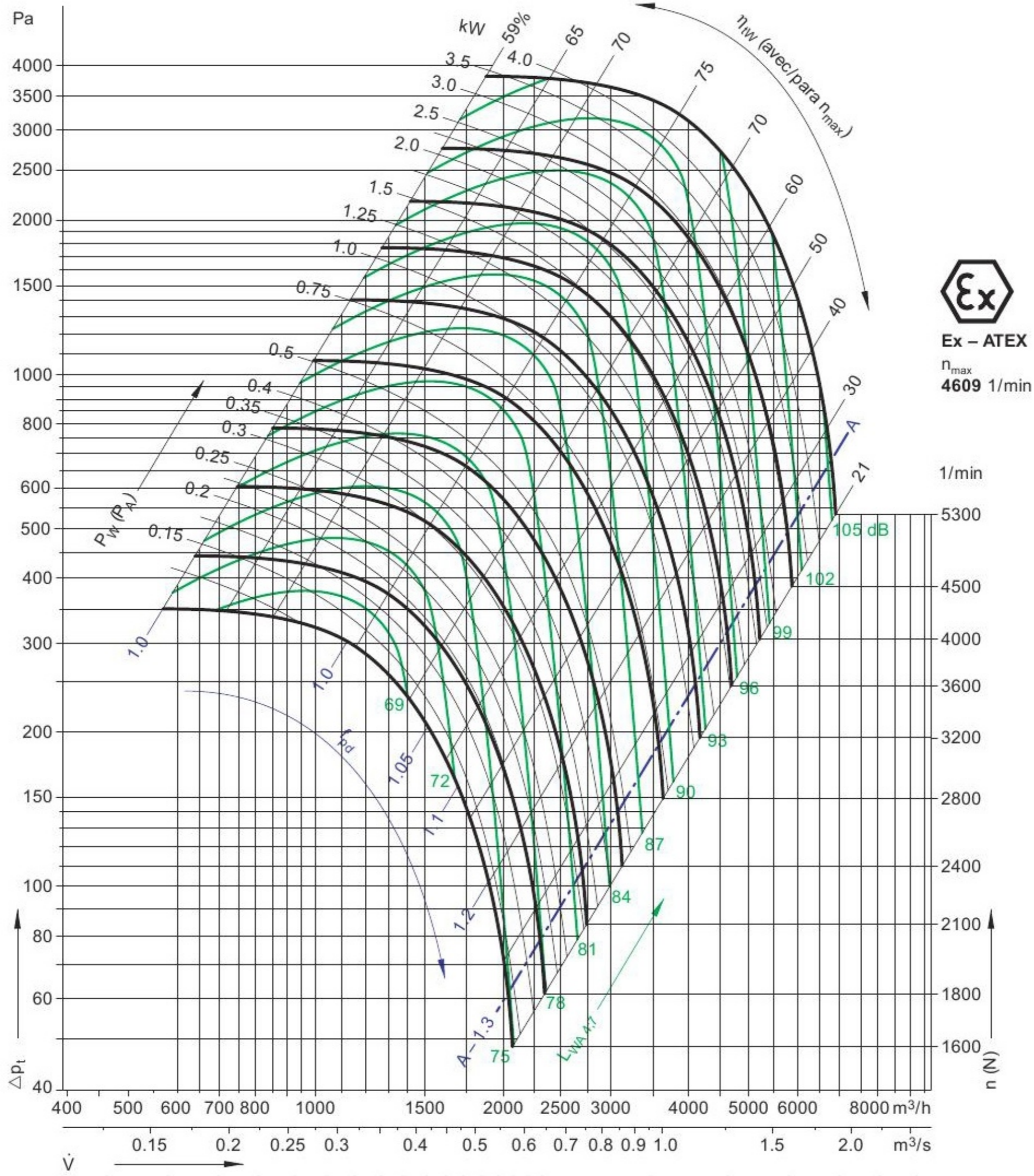




280 mm

WHEEL DIAMETER

$\rho_l = 1.2 \text{ kg/m}^3$



Ex - ATEX

$n_{max}$   
4609 1/min

1/min

5300

4500

4000

3600

3200

2800

2400

2100

1800

1600

$n$  (rpm)

105 dB

102

99

96

93

90

87

84

81

78

75

A-1.3

LWA 1.7

1.0

1.05

1.1

1.2

1.3

1.4

1.5

1.6

1.7

1.8

1.9

2.0

$\dot{V}$

0.15

0.2

0.25

0.3

0.4

0.5

0.6

0.7

0.8

0.9

1.0

1.5

2.0

$\text{m}^3/\text{s}$

400

500

600

700

800

1000

1500

2000

2500

3000

4000

5000

6000

8000

$\text{m}^3/\text{h}$

3.5

3.0

2.5

2.0

1.5

1.25

1.0

0.75

0.5

0.4

0.35

0.3

0.25

0.2

0.15

$P_w$  (kW)

3.5

3.0

2.5

2.0

1.5

1.25

1.0

0.75

0.5

0.4

0.35

0.3

0.25

0.2

0.15

$\eta_w$  (%)

59%

65

70

75

70

60

50

40

30

21

$\eta_w$  (avec/para  $n_{max}$ )

3.5

4.0

65

70

75

70

60

50

40

30

21

$n$  (rpm)

4609

4609

4609

4609

4609

4609

4609

4609

4609

4609

4609

4609

4609

4609

4609

4609

4609

4609

4609

4609

4609

4609

4609

4609

4609

4609

4609

4609

4609

4609

4609

4609

4609

4609

4609

4609

4609

4609

4609

4609

4609

4609

4609

4609

4609

4609

4609

4609

4609

4609

4609

4609

4609

4609

4609

4609

4609

4609

4609

4609

4609

4609

4609

4609

4609

4609

4609

4609

4609

4609

4609

4609

4609

4609

4609

4609

4609

4609

4609

4609

4609

4609

4609

4609

4609

4609

4609

4609

4609

4609

4609

4609

4609

4609

4609

4609

4609

4609

4609

4609

4609

4609

4609

4609

4609

4609

4609

4609

4609

4609

4609

4609

4609

4609

4609

4609

4609

4609

4609

4609

4609

4609

4609

4609

4609

4609

4609

4609

4609

4609

4609

4609

4609

4609

4609

4609

4609

4609

4609

4609

4609

4609

4609

4609

4609

4609

4609

4609

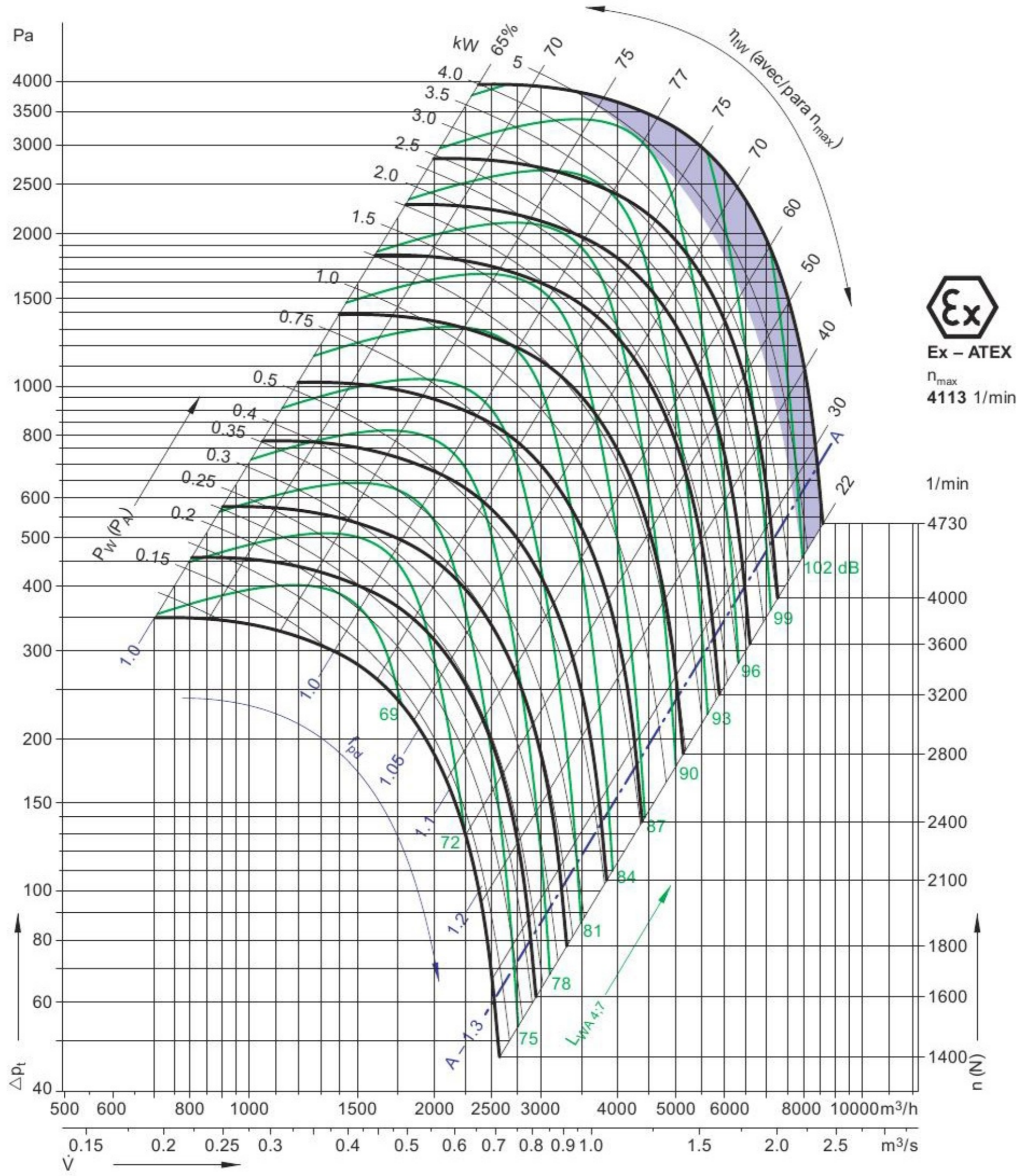
4609



315 mm

WHEEL DIAMETER

$\rho_1 = 1.2 \text{ kg/m}^3$



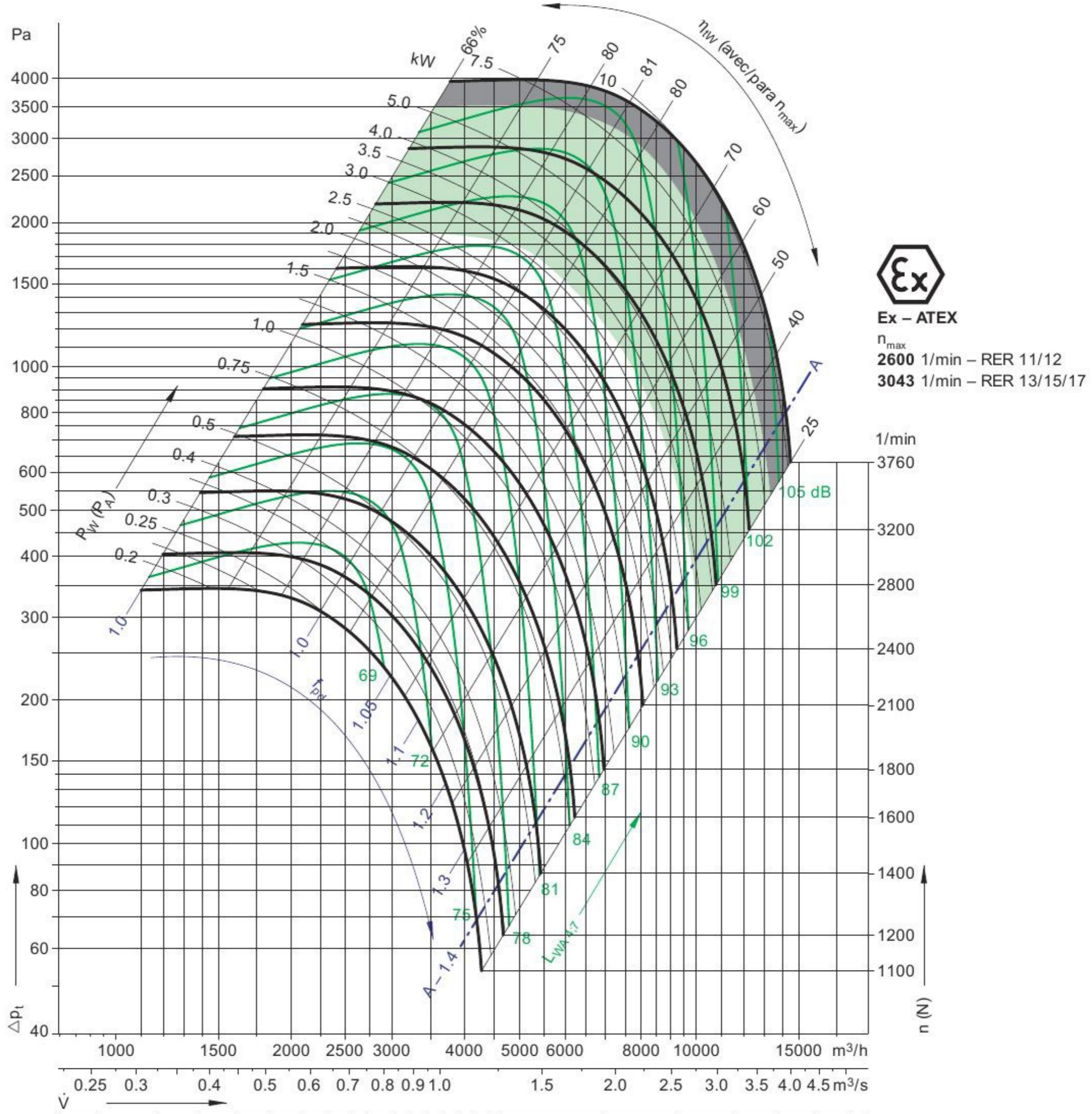




400 mm

WHEEL DIAMETER

$\rho_1 = 1.2 \text{ kg/m}^3$



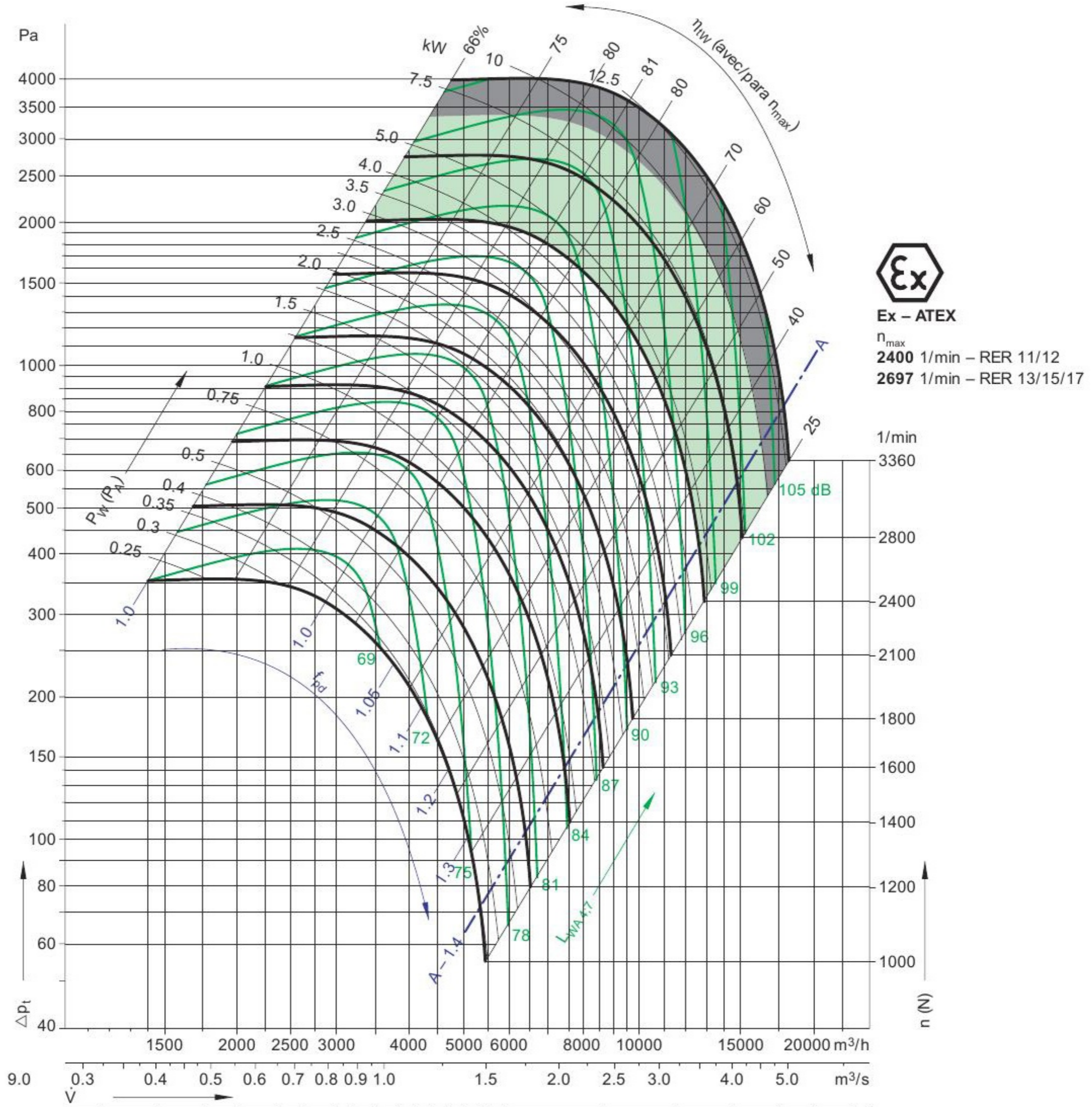




450 mm

WHEEL DIAMETER

$\rho_1 = 1.2 \text{ kg/m}^3$

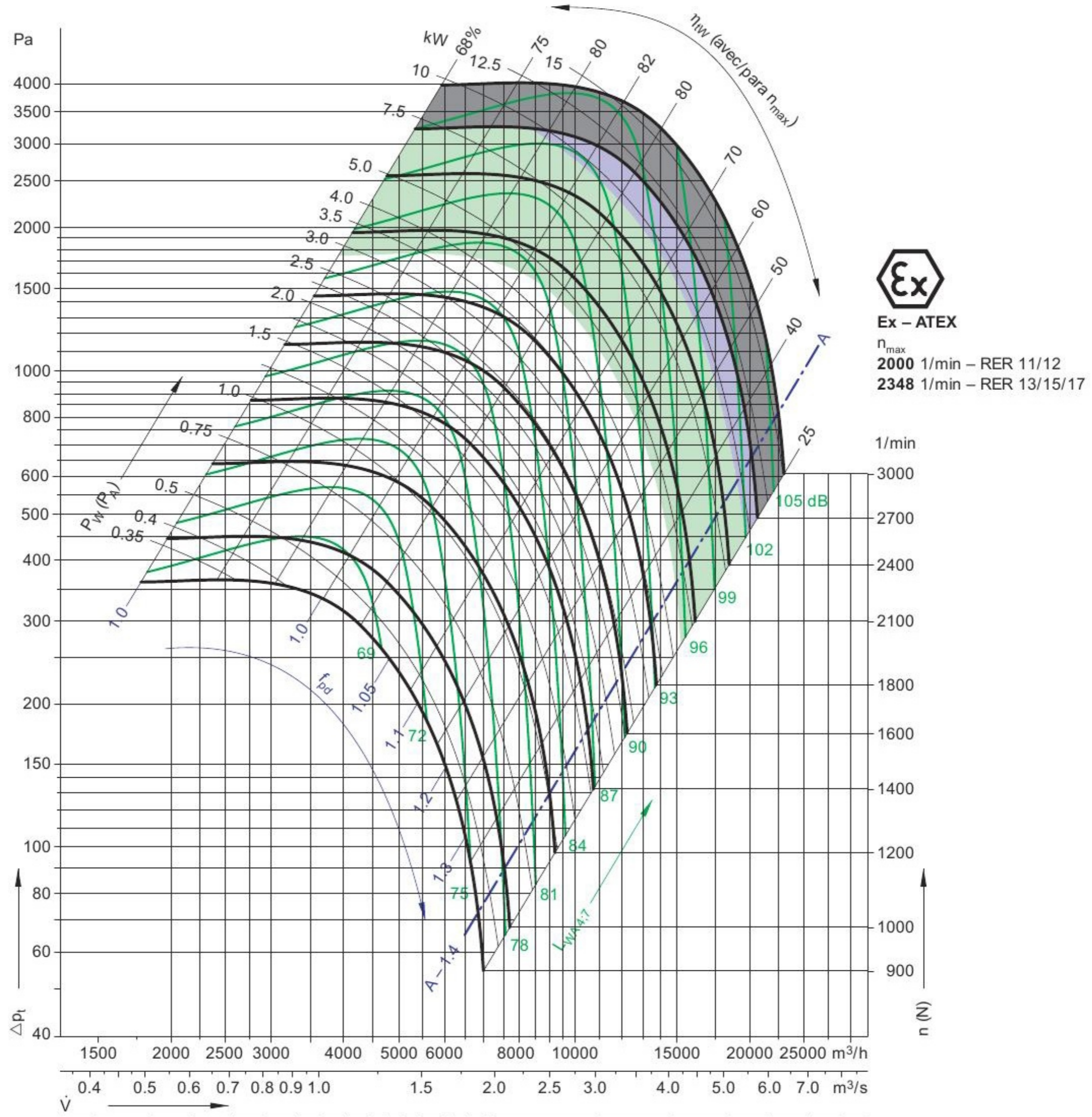




500 mm

WHEEL DIAMETER

$\rho_1 = 1.2 \text{ kg/m}^3$

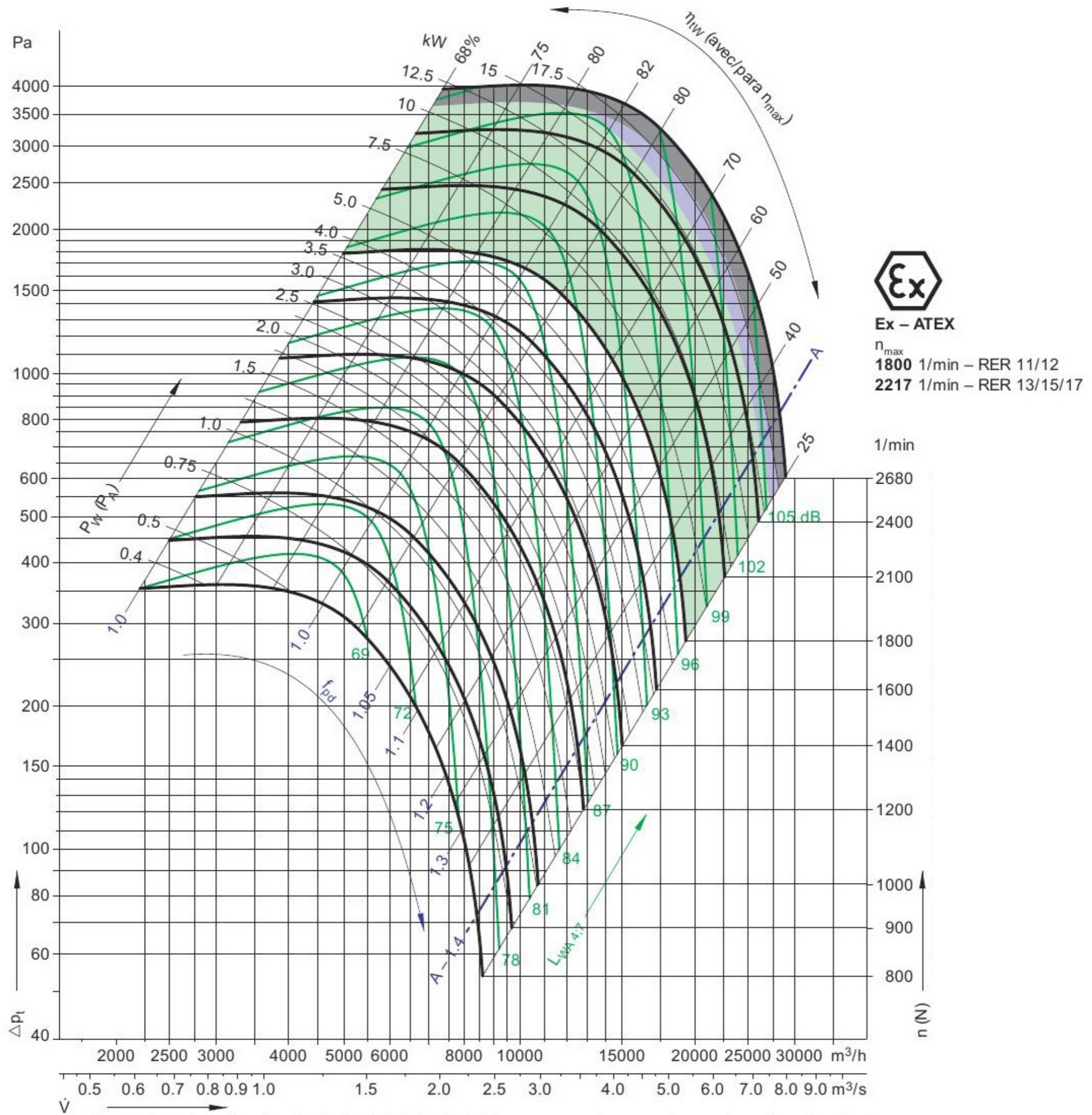




560 mm

WHEEL DIAMETER

$\rho_1 = 1.2 \text{ kg/m}^3$

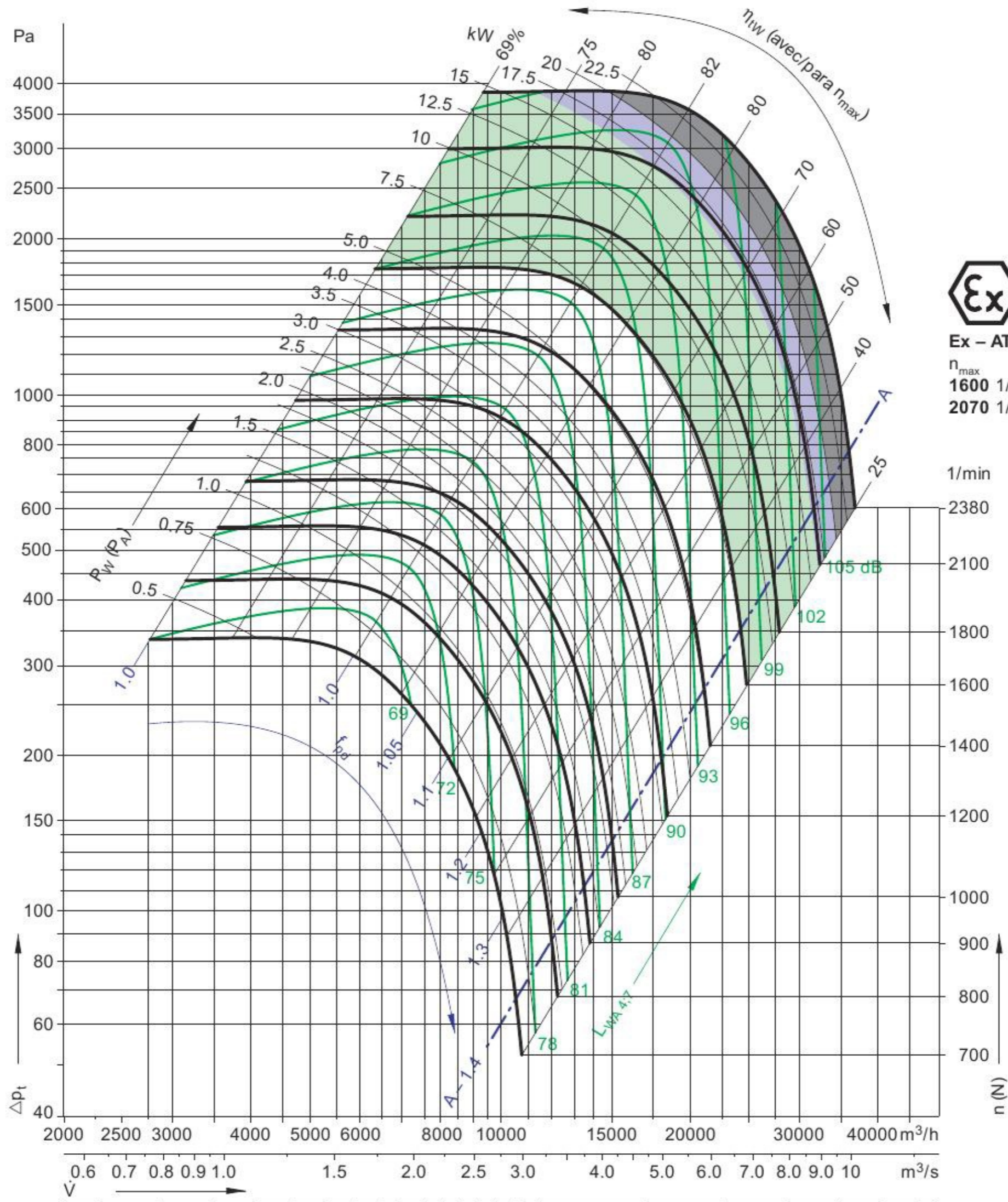




630 mm

WHEEL DIAMETER

$\rho_1 = 1.2 \text{ kg/m}^3$



Ex - ATEX

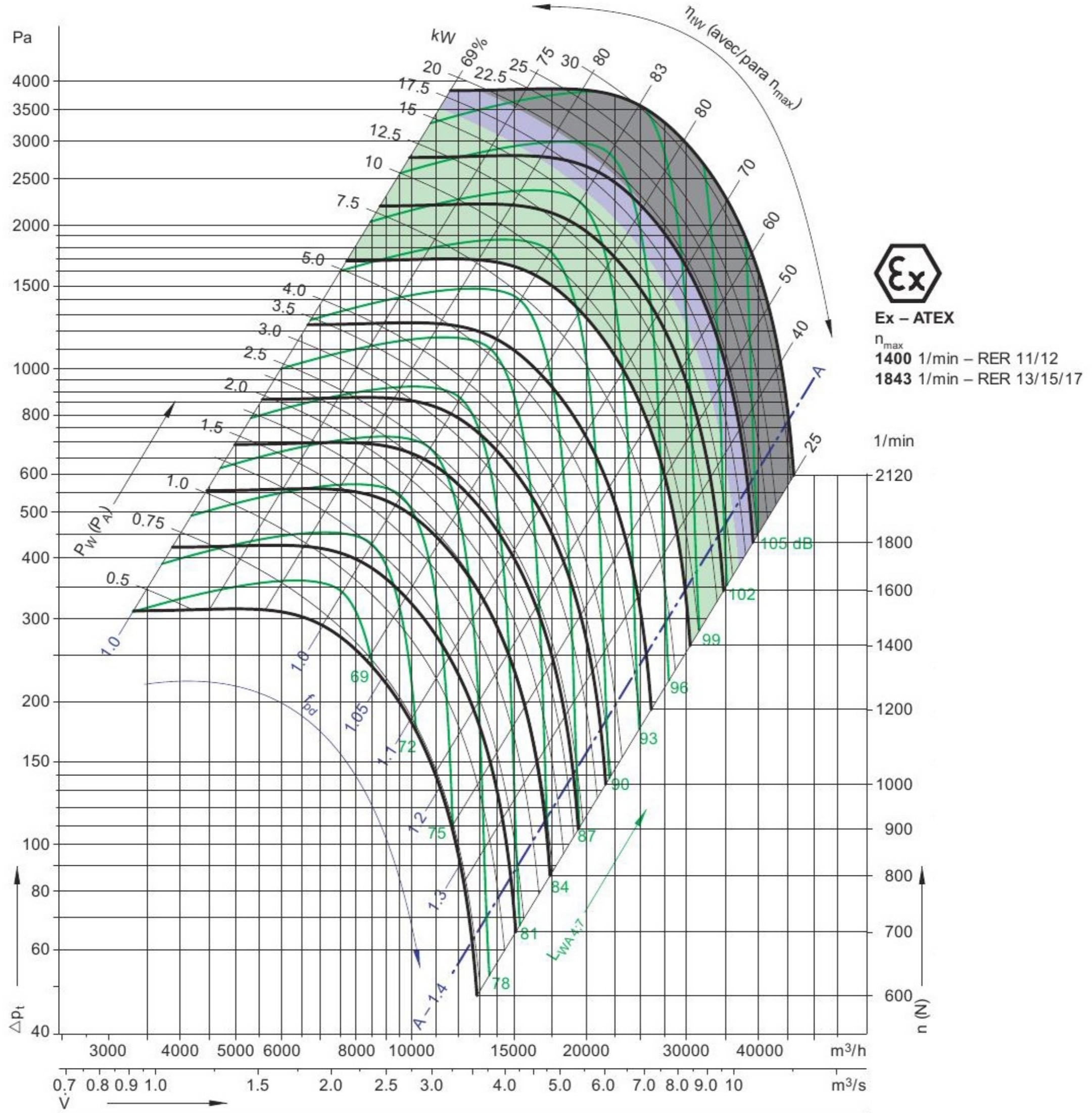
$n_{max}$   
1600 1/min - RER 11/12  
2070 1/min - RER 13/15/17



710 mm

WHEEL DIAMETER

$\rho_1 = 1.2 \text{ kg/m}^3$

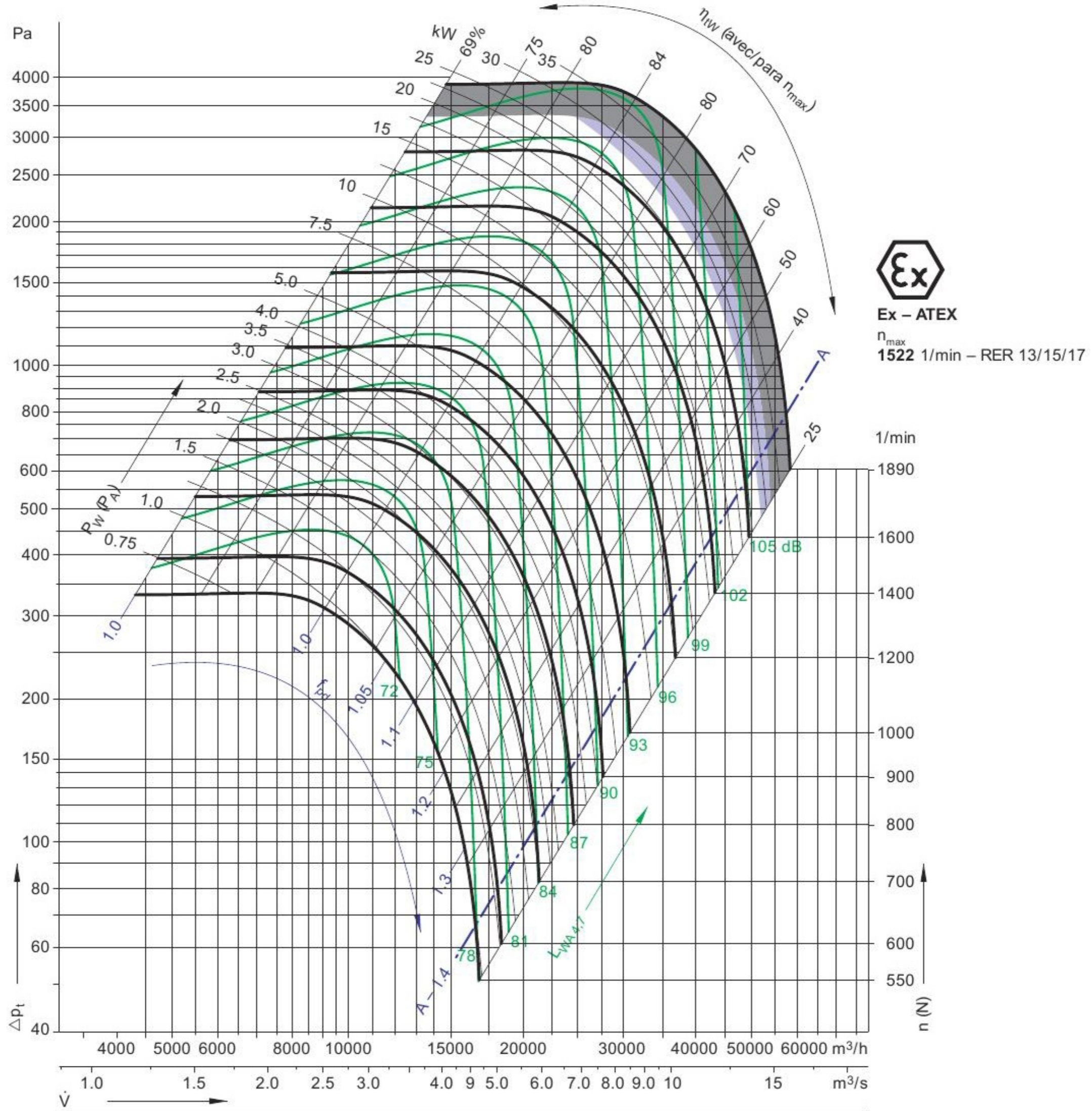




800 mm

WHEEL DIAMETER

$\rho_1 = 1.2 \text{ kg/m}^3$

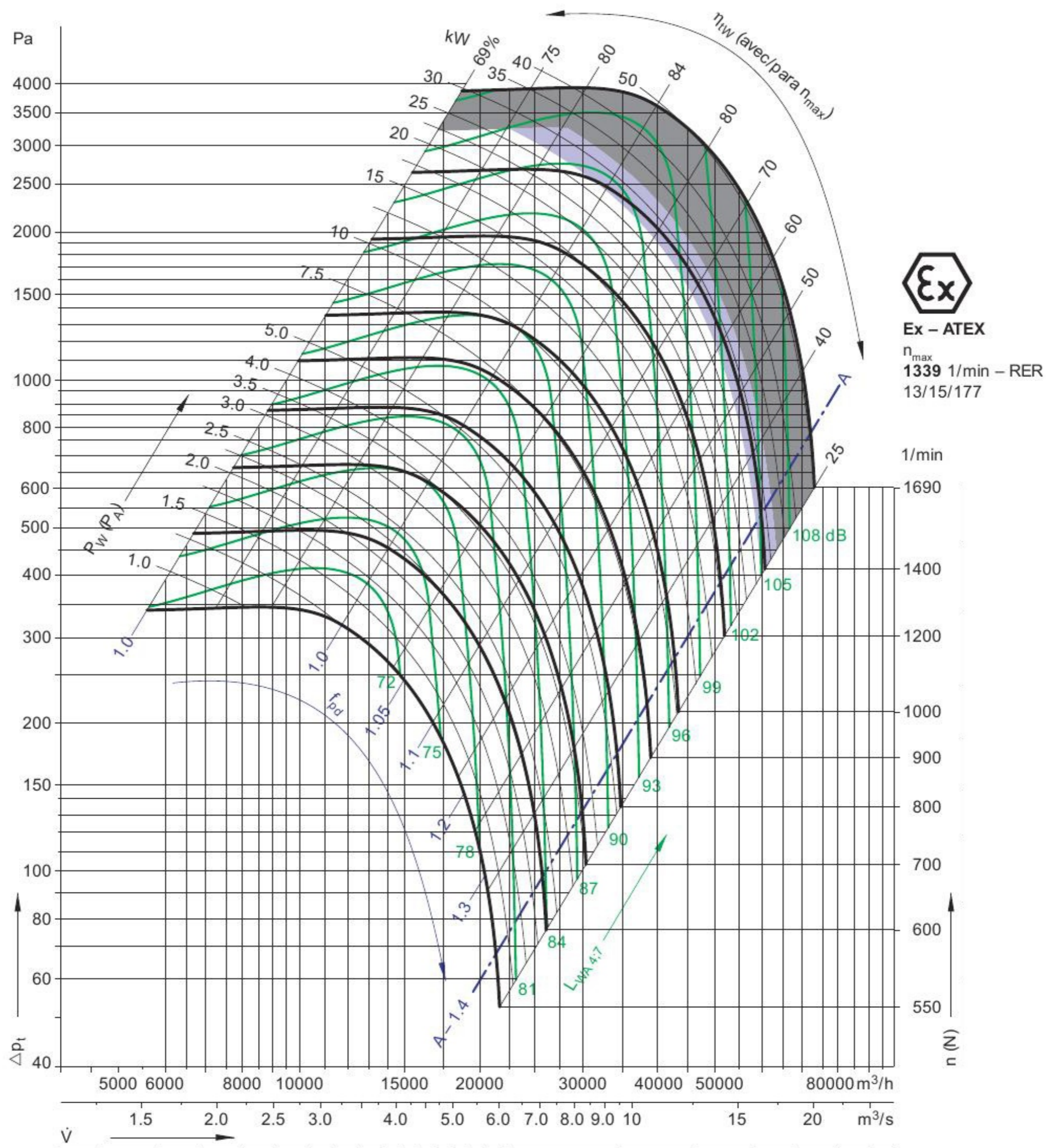




900 mm

WHEEL DIAMETER

$\rho_1 = 1.2 \text{ kg/m}^3$

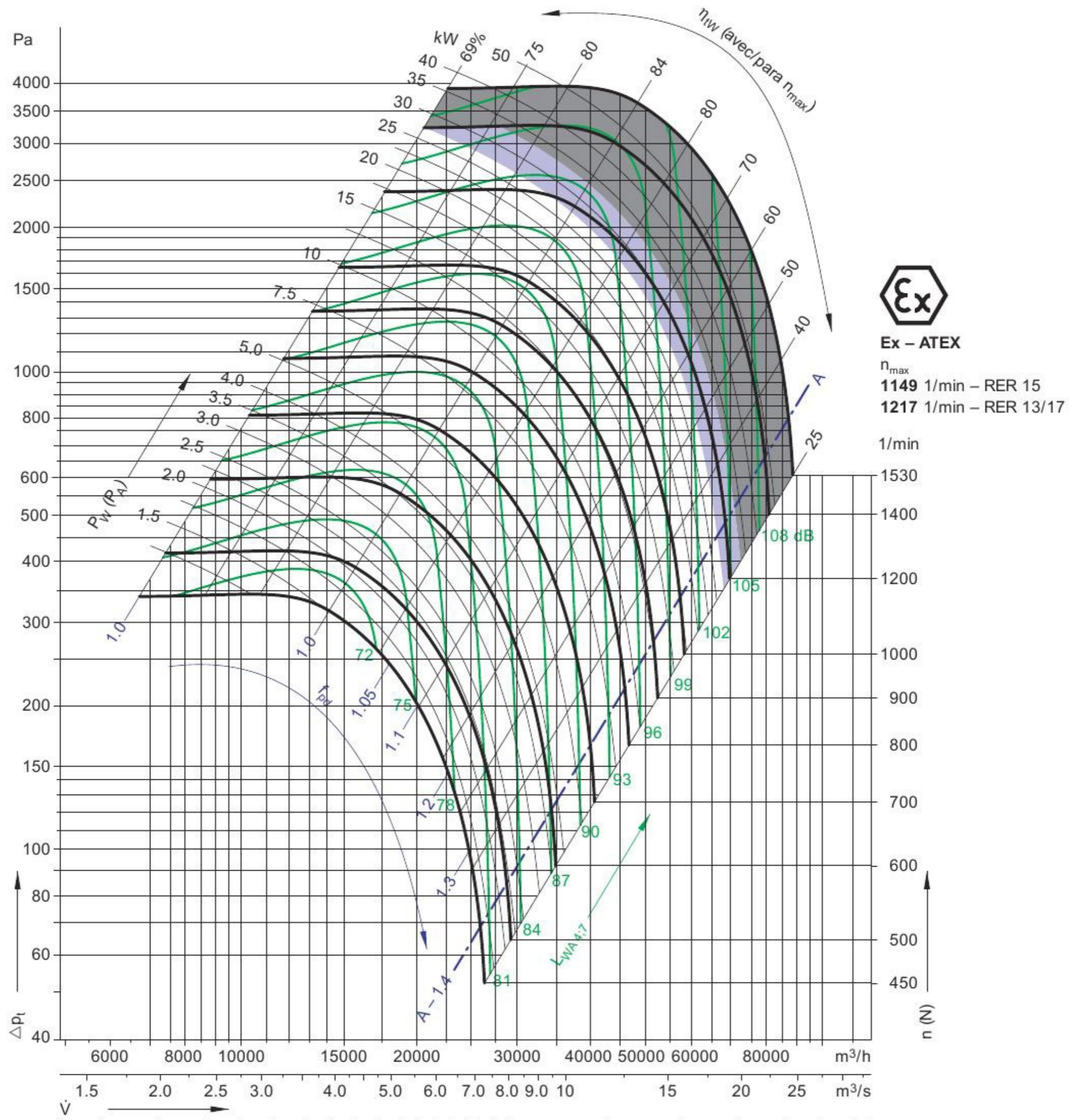




1000 mm

WHEEL DIAMETER

$\rho_1 = 1.2 \text{ kg/m}^3$



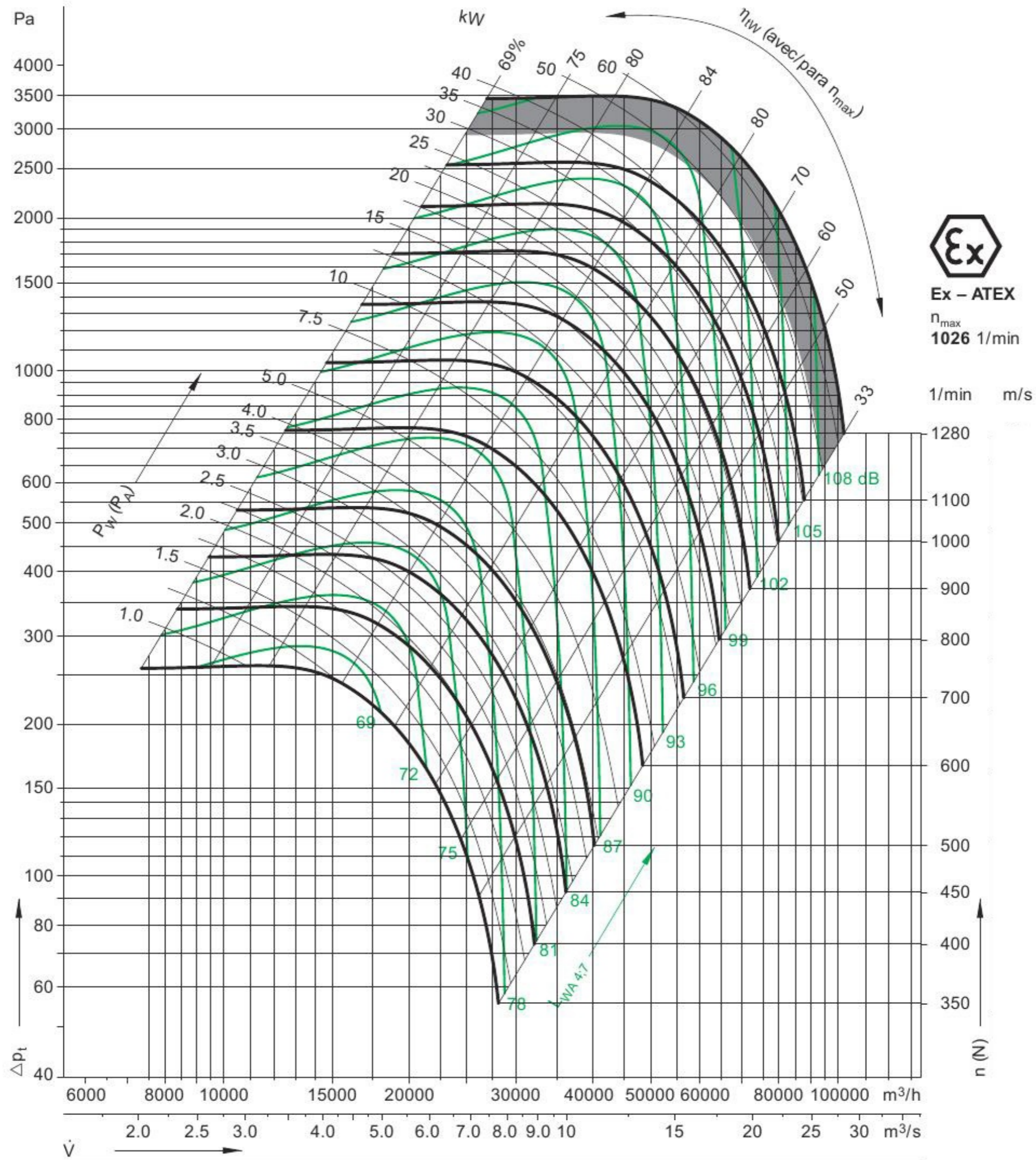




1120 mm

WHEEL DIAMETER

$\rho_1 = 1.2 \text{ kg/m}^3$

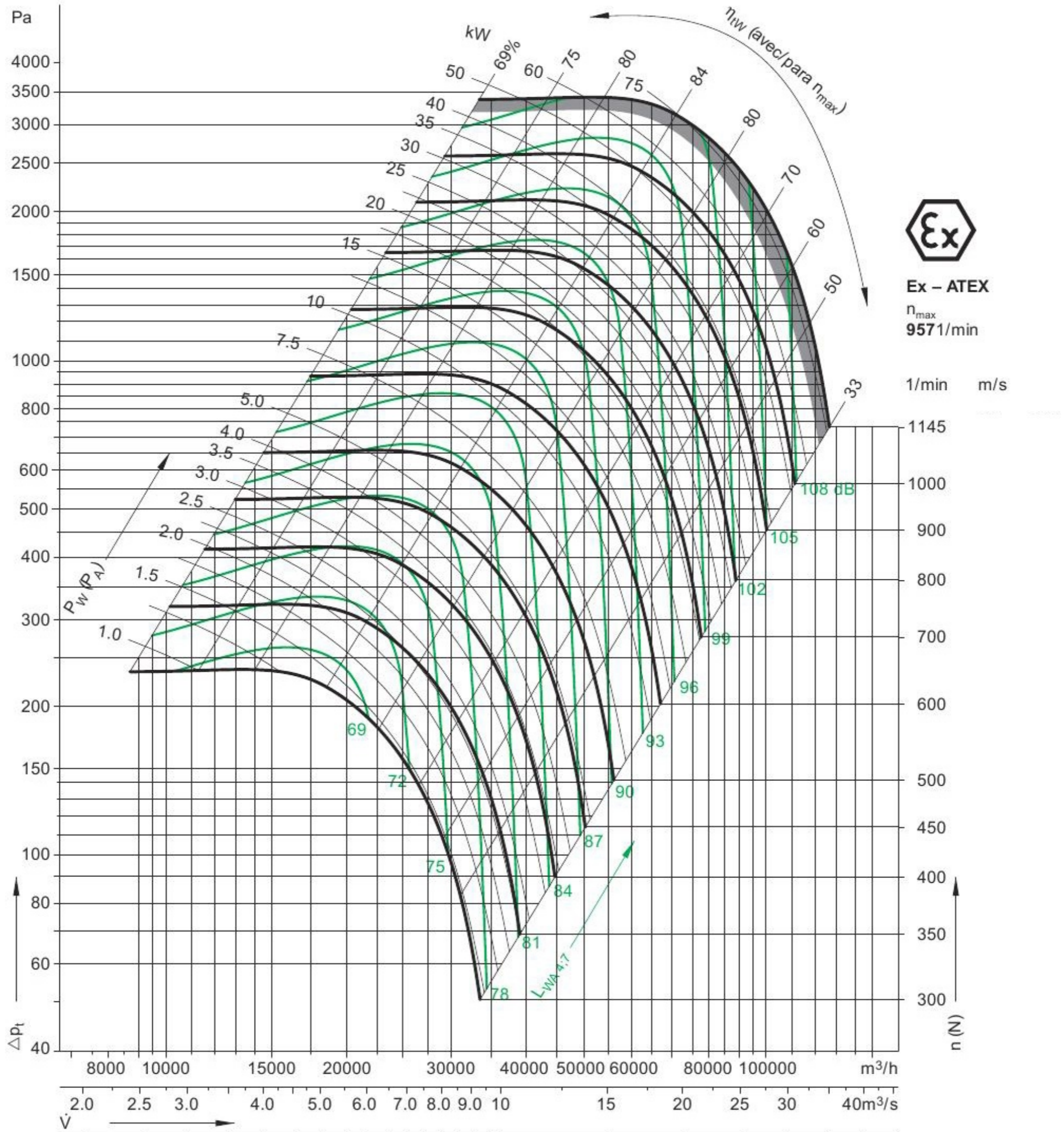




1250 mm

WHEEL DIAMETER

$\rho_1 = 1.2 \text{ kg/m}^3$

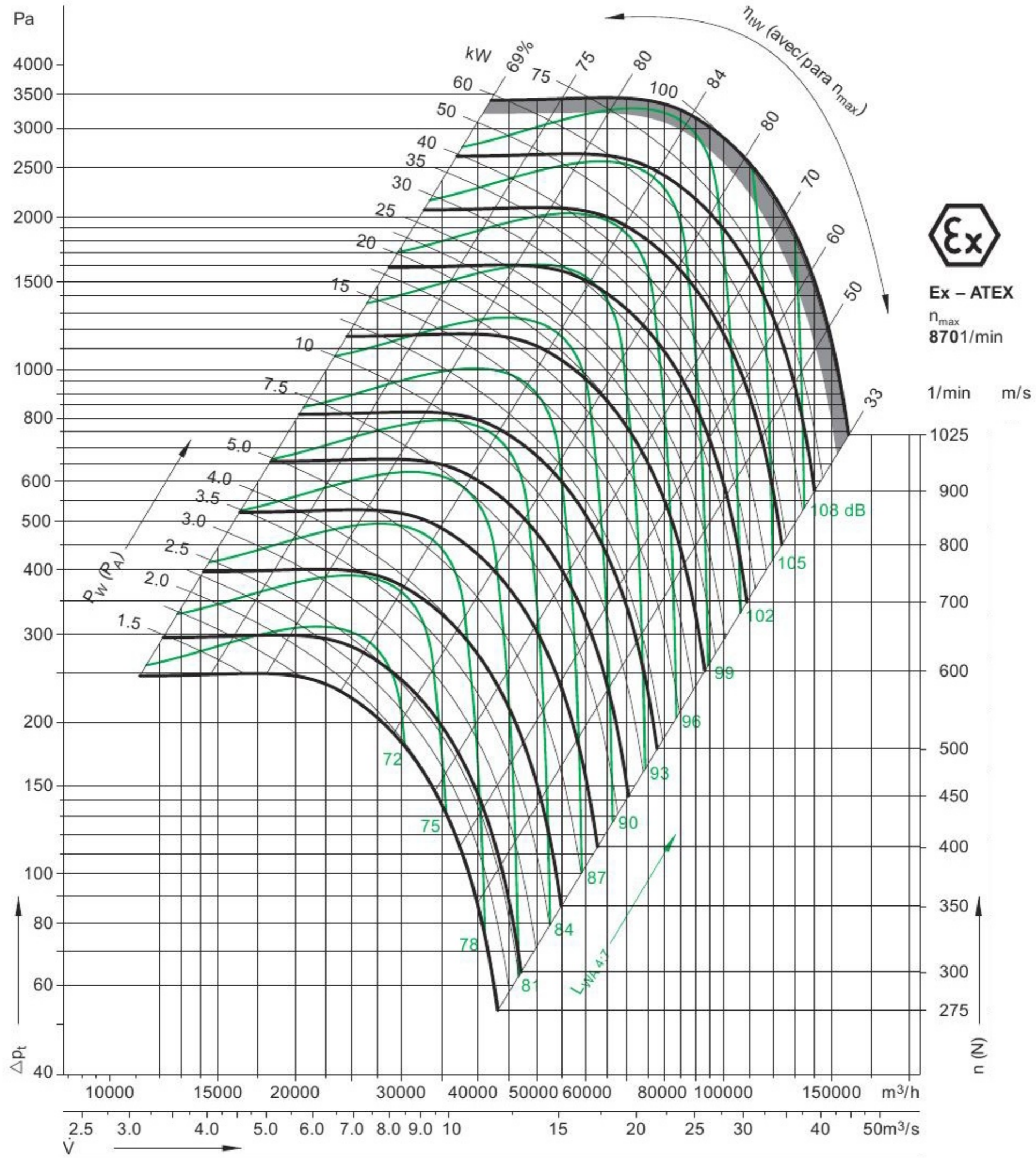




1400 mm

WHEEL DIAMETER

$\rho_1 = 1.2 \text{ kg/m}^3$





1600 mm

WHEEL DIAMETER

$\rho_1 = 1.2 \text{ kg/m}^3$

